



# Sargas

## 2-PORT UHF RFID READER



The ThingMagic® Sargas reader is a high-performance, 2-antenna-port, UHF reader in a low profile enclosure. Built around the ThingMagic Micro reader module, the device reads more than 750 tags per second at distances over 9 meters (30 feet) when configured with appropriate antennas. With an onboard processor, memory and removable flash storage, the reader has features designed for enterprise

### EASY SYSTEMS INTEGRATION

ThingMagic Sargas reader makes system integration easier in 3 ways:

- ▶ Hardware features
- ▶ Sargas reader architecture
- ▶ Supporting software tools & API

Careful use of these capabilities can reduce hardware count and software development time in a project.

### Hardware Features

The reader has extensive hardware input/output features. In addition to Ethernet, 2 USB (one host, one client), and 4 opto-isolated General Purpose Input/Output (GPIO) ports the Sargas reader has a unique HDMI port. Integrating a display into an RFID

system often involves adding a separate PC to take advantage of standard peripherals or adding a custom display. With an HDMI port built into the reader, a standard display or monitor can be directly attached reducing hardware count and development time.

### Sargas Reader Architecture

The Sargas reader architecture is based on a 1 GHz ARM Cortex A8 processor running Linux kernel version 3.8. This is supported by 512 MBytes of DDR memory and 4 GBytes of FLASH memory. Onboard applications are supported via the Mercury OS C API.

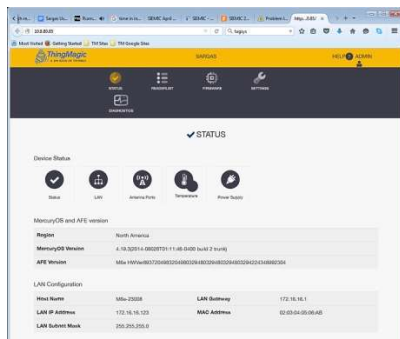
MercuryOS additions include web-based configuration & monitoring using HTTP/HTTPS and SSL/SSH-based security. Reader networking features include a TCP/IP stack plus Cisco-certified DHCP & DNS-based configuration and firmware management.

### Development Tools

The Sargas reader is based on the powerful ThingMagic Micro module, and supports the Mercury API. This API is common across all ThingMagic reader modules and finished readers. Code that is developed for one system may be reused in other designs and projects.

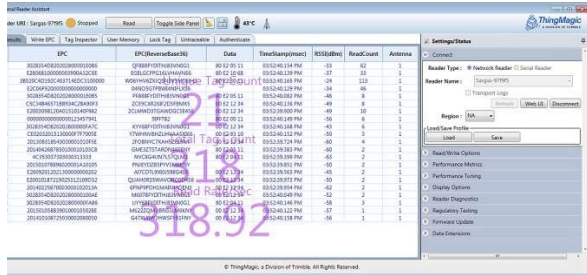
## Key Features

- ▶ Reads up to 750 tag per second
- ▶ World-wide frequency coverage
- ▶ Networking, GPIO, USB, micro SD ports
- ▶ Unique on-board HDMI interface
- ▶ Mercury API, Universal Reader Assistant software support
- ▶ Independent read and write RF controls



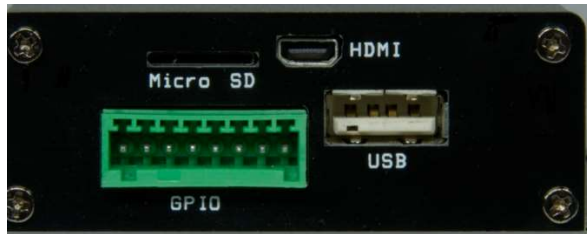
# Sargas 2-PORT, UHF RFID READER

For a sales inquiry or quote  
**SAVE TYPING**  
 - use the  
**QR code**



Physical & Environmental	
Dimensions	87 mm L x 80 mm W x 23.8 mm H
	0.27 Kg (0.6 lbs)
Operating temperature	-20 to +60°C (-4 to +140°F)
Storage temperature	-40 to +85°C (-40 to +185°F)

RF Interface	
Antenna Ports	2 ports with RP-SMA connectors
RF Power output	0 dBm to 30 dBm (1 W), ±1.0 dBm
RF Power control	Command-adjustable with separate read and write levels
Default RF Power Output	+30 dBm ±1.0 dBm
Frequency	Pre-configured for these regions: <ul style="list-style-type: none"> <li>▶ FCC/IC 902-928 MHz, 917.4-927 MHz, 917.5-922.5 MHz (Americas)</li> <li>▶ ETSI 865.6-867.6 MHz, 869.85 MHz (EU)</li> <li>▶ TRAI 865-867 MHz (India)</li> <li>▶ KCC 917-920.8 MHz (Korea)</li> <li>▶ ACMA 920-926 MHz</li> <li>▶ SRRC-MII 920-925 MHz (P.R. China)</li> <li>▶ MIC 916.7-920.9 MHz (Japan)</li> <li>▶ Open (Customizable) 865-869 MHz, 902-928 MHz</li> </ul>



RFID Parameters	
Protocols	EPC Gen 2V2 ISO 18000-63 ISO 18000-6B, IPx, AEI ATA * EPC Global LLRP V1.1
Tag read rate	> 750 tags per sec. (settings dependent)
Tag read distance	> 9 m (30 ft) with appropriate antenna

\* These protocols require additional licenses

Miscellaneous	
Power	4.5 to 5.5 V dc, 15 W max
Regulatory	FCC/IC, CE Mark
Safety	IEC 60950-1 (ed. 2), US-17650-UL

**AMERICAS**  
 Trimble Navigation Limited  
 Technology Sales Group  
 935 Stewart Drive  
 Sunnyvale CA 94085  
 USA

+1-408-592-0875  
 E: technology@trimble.com

**EUROPE-MIDDLE-EAST-AFRICA**  
 Trimble Navigation Limited  
 Technology Sales Group  
 Am Prime Parc 11  
 D-65479 Raunheim  
 Germany

Tel: +49-6142-2100-0  
 E: technology@trimble.com

**CHINA**  
 Trimble Navigation Limited  
 Technology Sales Group  
 20F, Central Tower  
 China Overseas Plaza, 8 Yard  
 Guang Hua Dong Li  
 Chayoyang District  
 Beijing 100020  
 China

+86-186-01172960.  
 E: technology@trimble.com

**INDIA**  
 Trimble Navigation Limited  
 Technology Sales Group  
 Bangaluru  
 Karnataka  
 India

+91-9845 152674  
 E: technology@trimble.com

**OTHER LOCATIONS**  
 Trimble Navigation Limited  
 Technology Sales Group  
 935 Stewart Drive  
 Sunnyvale CA 94085  
 USA

+1-408-592-0875  
 E: technology@trimble.com

2016, Trimble Navigation Limited, All rights reserved. Trimble and the Globe & Triangle are trademarks of Trimble Navigation Limited, registered in the United States Patent and Trademark Office and in other countries. All other trademarks are the property of their respective owners. PN TSG 2001 (4/16)