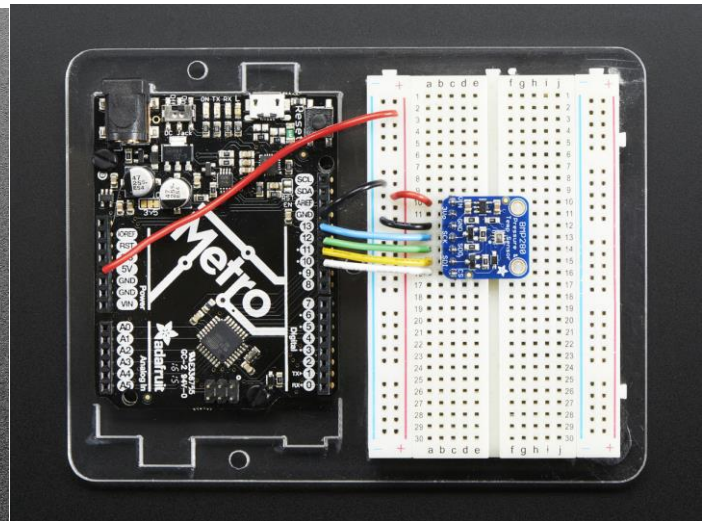
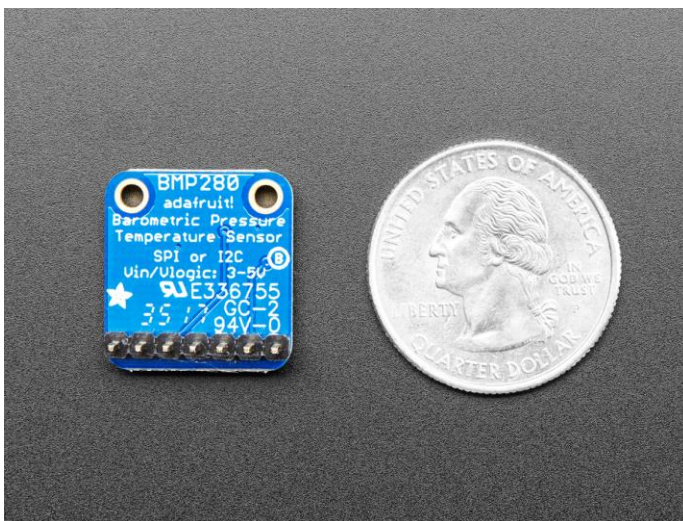
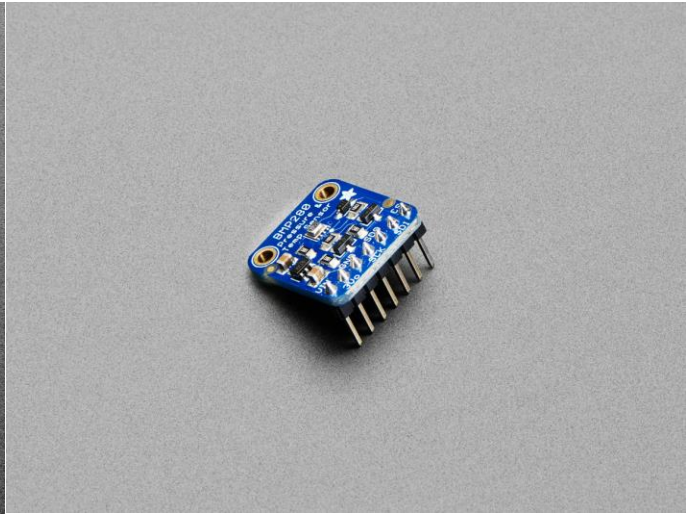
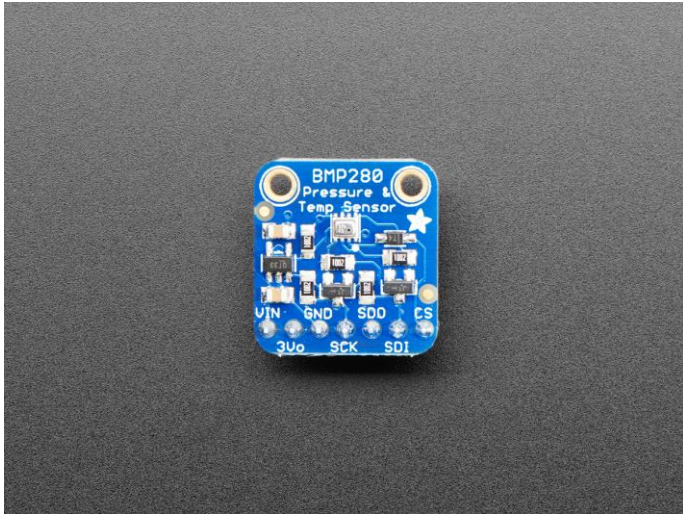




# Adafruit BMP280 I2C or SPI Barometric Pressure & Altitude Sensor – Assembled

PRODUCT ID: 4059



## DESCRIPTION

Bosch has stepped up their game with their BMP280 sensor, an environmental sensor with temperature, barometric pressure that is the next generation upgrade to the BMP085/BMP180/BMP183. This sensor is great for all sorts of weather sensing and can even be used in both I2C and SPI!

This precision sensor from Bosch is the best low-cost, precision sensing solution for measuring barometric pressure with  $\pm 1$  hPa absolute accuracy, and temperature with  $\pm 1.0^{\circ}\text{C}$  accuracy. Because pressure changes with altitude, and the pressure measurements are so good, you can also use it as an altimeter with  $\pm 1$  meter accuracy.

The BME280 is the next-generation of sensors from Bosch, and is the upgrade to the BMP085/BMP180/BMP183 – with a low altitude noise of 0.25m and the same fast conversion time. It has the same specifications, but can use either I2C or SPI. For simple easy wiring, go with I2C. If you want to connect a bunch of sensors without worrying about I2C address collisions, go with SPI.

Nice sensor right? So we made it easy for you to get right into your next project. The surface-mount sensor is soldered onto a PCB and comes with a 3.3V regulator and level shifting so you can use it with a 3V or 5V logic microcontroller without worry. We even wrote up a nice tutorial with wiring diagrams, schematics, libraries and examples to get you running in 10 minutes!

Each order comes with one fully assembled and tested PCB breakout with headers attached and everything.

## TECHNICAL DETAILS

- [Datasheet](#)
- [Schematic](#)

Product Dimensions: 19.0mm x 18.0mm x 11.6mm / 0.7" x 0.7" x 0.5"

Product Weight: 1.7g / 0.1oz

